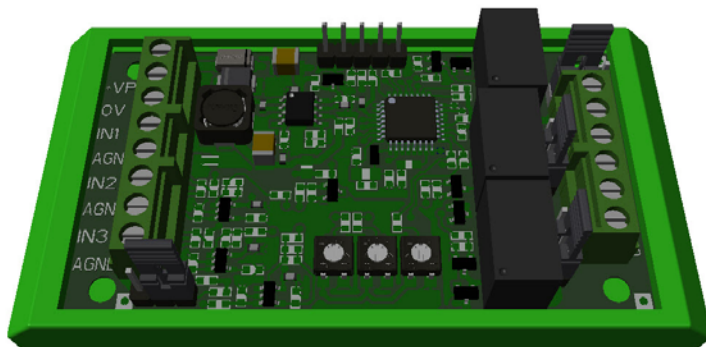


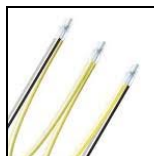


## SCHEDAPT - Motor thermal probes control card



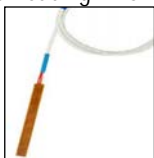
This Motive card allows to constantly monitor the motor temperature by reading the PT100 and/or PTC temperature probes on the motor and to provide an output contact N.C. (normally closed) which, connected in series to the power supply of the external line contactor, will stop the power supply of the motor at a temperature of 130°C.

SCHEDAPT is capable of reading PTC Motive thermistors



or up to 3 PT100

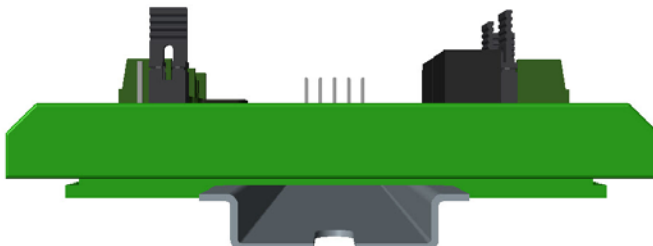
probes, both for winding



and for bearings



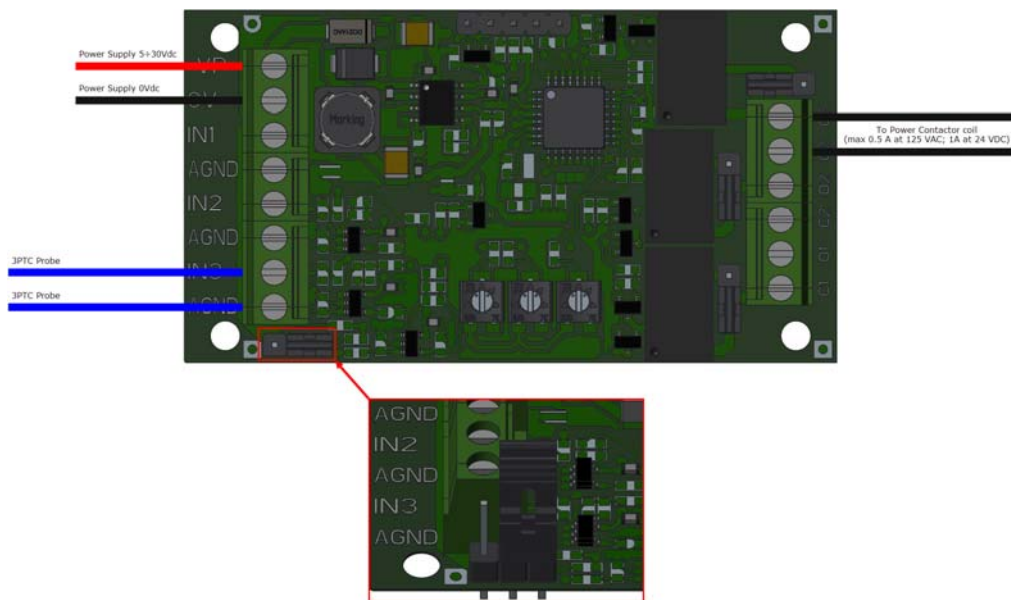
The case, simple and compact, allows this device to be mounted on a DIN rail.



Supply voltage: 5 ÷ 30Vdc max 100mA.



## Connection and setting for PTC thermistor



## Connection and setting for PT100 probes

